

calyxo

INSECTION SYSTEM MX

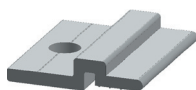
MECHANICAL SPECIFICATION		TECHNICAL DRAWING
Width [A]	68,2 mm	
Height [B]	36,8 mm	
Mounting depth [C]	13,0 mm	
Insection depth [D]	12,0 mm	
Profile length	6050 mm	
EPDM	Shore Härte 70 +/-5	
EPDM width	80,0 mm	
Application		
	Cross Profile Application	
	Pitched Roofings, Facade	

DESCRIPTION	BENEFITS
<p>With the Calyxo MX insection system, you install frameless Calyxo modules of the CX-Series are greatly improved. Specifically designed for the mounting of glass-glass laminates, the Calyxo MX insection system is compatible with frameless modules suitable for all mounting variations. This is due to its insertion technique no sticking or screwing is required. Thermal expansion of the roof surface, roof skin or the profile beam are decoupled from the floating module storage of the overall system. The module does not undergo any mechanical stresses and is therefore mounted gently.</p>	<ul style="list-style-type: none"> • specifically for frameless modules • quickly installed and easy to maintain improving installation times • tool-free module assembly • robust design and module-friendly • designed for glass-glass laminates with 6.9 mm + / -0.2 mm thickness (adaptable to other possible strengths) • Use of durable materials such as aluminum ensuring longevity and reliability • high stability • suitable for direct use on pitched roof surfaces, facade, etc.

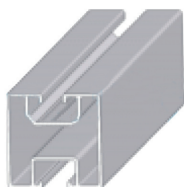
ACCESSORIES



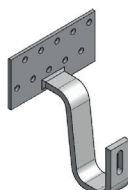
EPDM



X-CONNECTOR



CROSS PROFILE



ROOF HOOK



HANGER BOLT

calyxo

CALYXO GMBH
 OT Thalheim, Sonnenallee 1a
 06766 Bitterfeld-Wolfen, Germany

TEL +49 (0)3494 368 980-101
FAX +49 (0)3494 368 980-111

EMAIL calyxo@calyxo.com
WEB www.calyxo.com

Note:
 Installation instructions must be followed.
 See the installation and operating manual or contact the technical service for further information on approved installation and use of the product.
 Specifications subject to technical changes. Printed on environment-friendly paper. © Calyxo GmbH EU/English; MX_Rev. 1, April 2013